

HATCH LEGEND

[Pattern]	DENOTES NEW STANDARD PAVEMENT SECTION
[Pattern]	DENOTES REVERSE (SPILLING) CURB & GUTTER
[Pattern]	DENOTES CONCRETE CURB & GUTTER (CATCHING)
[Pattern]	DENOTES AREA OF DEPRESSED CURB AND GUTTER.
[Pattern]	DENOTES PROP. SIDEWALK
[Pattern]	DENOTES AREA OF DEPRESSED SIDEWALK
[Pattern]	DENOTES AREA TO UTILIZE TRUNCATED DOMES
[Pattern]	DENOTES AREA OF EXISTING SIDEWALK
[Pattern]	DENOTES AREA OF HEAVY DUTY PAVEMENT SECTION

- PARKING LOT A EXISTING IMPERVIOUS AREA BEING MODIFIED (170,168 SF.)
- PARKING LOT A PROPOSED IMPERVIOUS AREA (162,658 SF.)

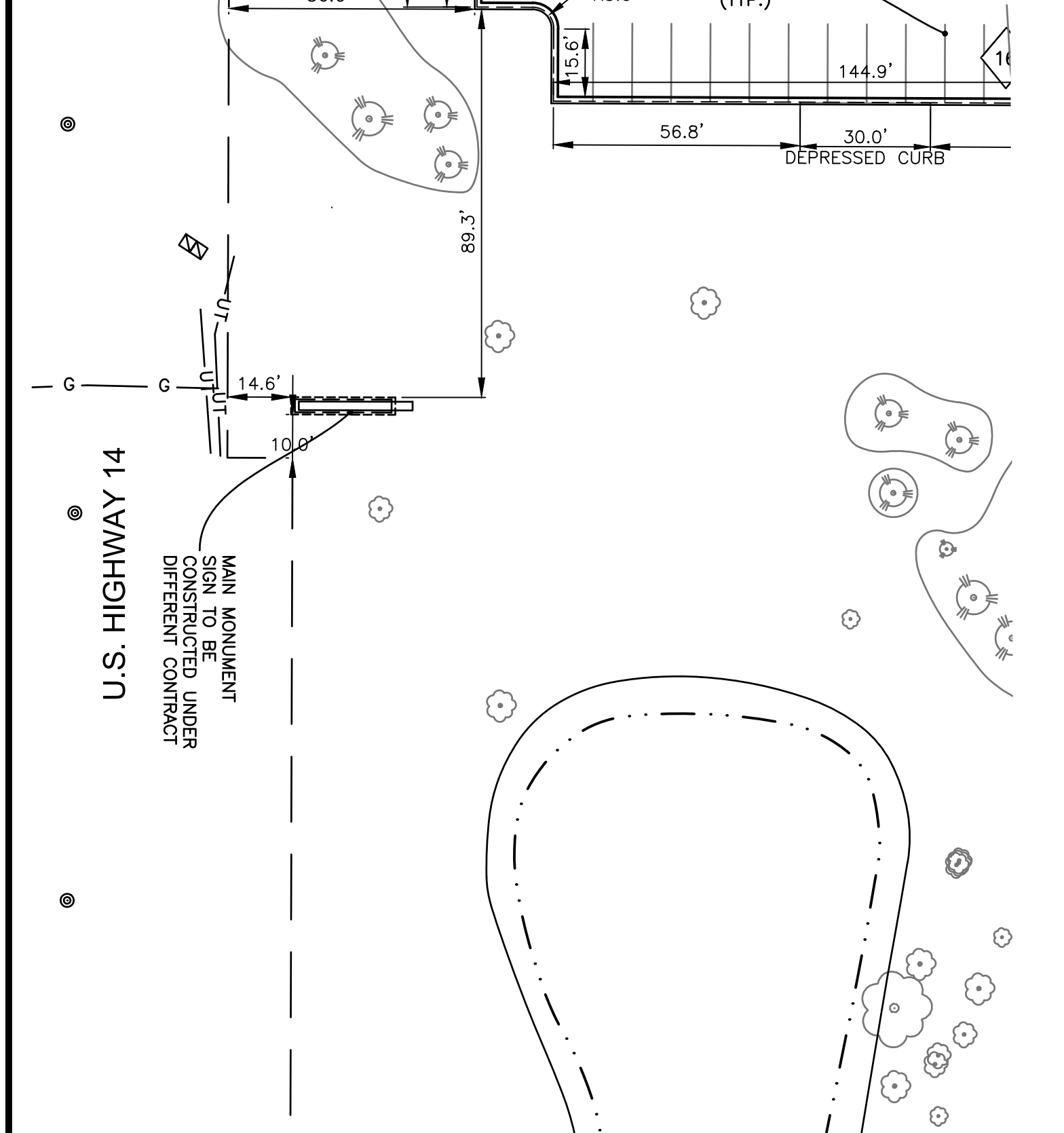
- ### PROJECT NOTES:
- * CONTRACTOR TO COORDINATE W/ COLLEGE PRIOR TO CLOSING ANY PORTIONS OF THE PARKING LOT.
 - * ALL CONSTRUCTION FOR UTILITIES AND STREET/PARKING LOTS SHOULD BE DONE IN ACCORDANCE WITH CITY OF CRYSTAL LAKE STANDARD SPECIFICATION
 - * ALL CONCRETE CURB SHALL BE 8-6.12 CURB AND GUTTER UNLESS OTHERWISE NOTED ON THE PLANS.
 - * ALL PAVEMENT DIMENSIONS ARE MEASURED TO THE EDGE OF PAVEMENT UNLESS OTHERWISE NOTED.
 - * ALL PAVEMENT RADII ARE 5.0' RADIUS MEASURED TO THE EDGE OF PAVEMENT UNLESS OTHERWISE NOTED.
 - * ALL CURB ADJOINING SIDEWALKS SHALL BE DOWELED INTO THE CURB.

- ### PARKING DATA:
- * NUMBER OF REGULAR PARKING STALLS: 439
 - * NUMBER OF ADA STALLS: 9
 - * TOTAL NUMBER OF STALLS: 448
 - * TOTAL NUMBER OF EXIST. STALLS: 436
 - * TYPICAL PARKING WIDTH: 9.0'
 - * TYPICAL PARKING LENGTH: 18.0'
 - * TYPICAL ISLE WIDTH: 24'

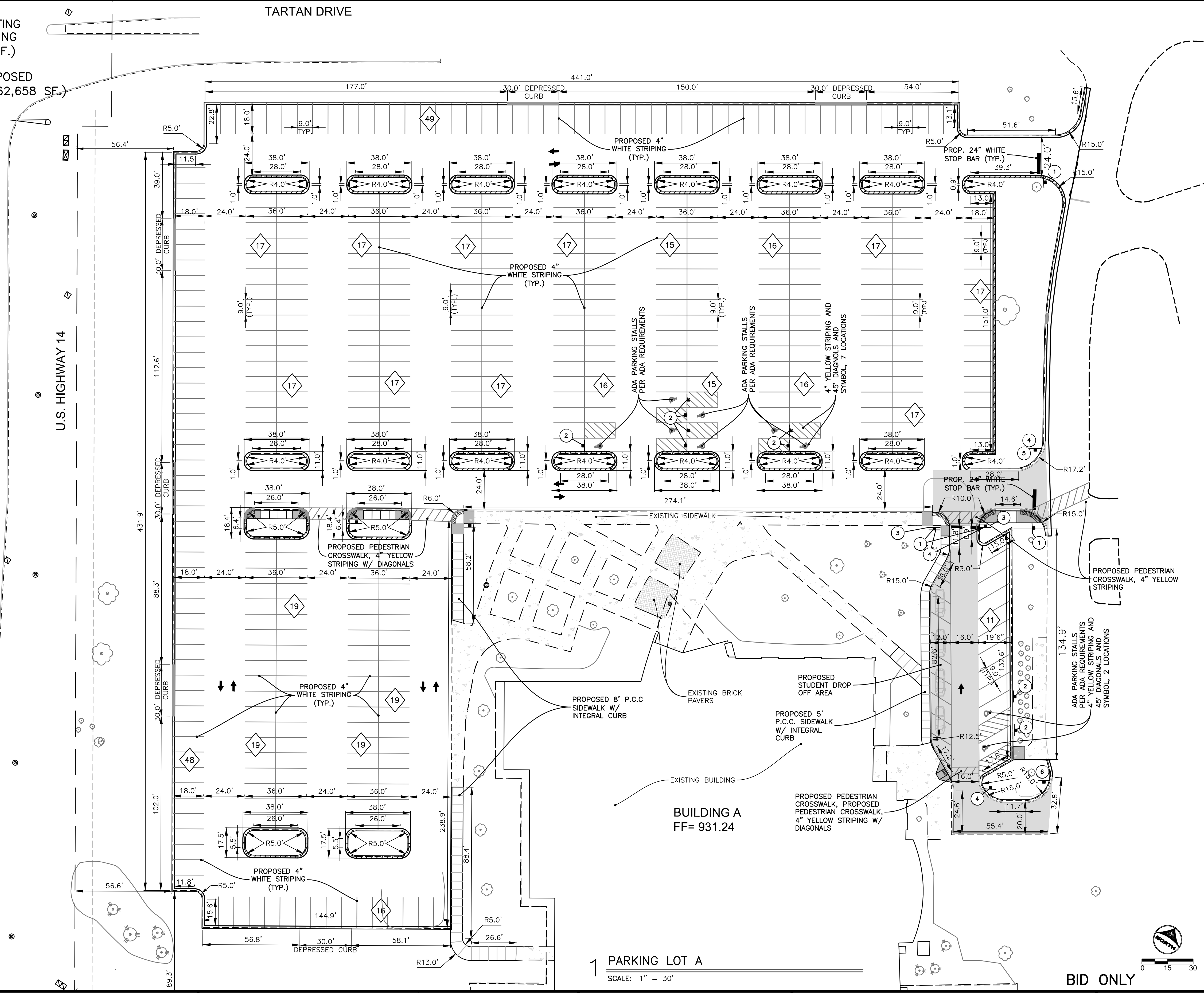
SIGN LEGEND:

SIGN LOCATION AS NOTED ON PLAN

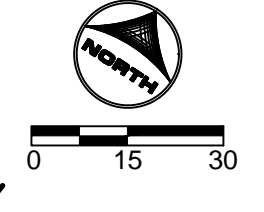
1 [STOP]	DENOTES "STOP" R1-1, 30" X 30" (TYP.)
2 [Handicapped]	DENOTES "HANDICAPPED PARKING" R7-1101 6" X 12" (TYP.)
3 [No Entry]	DENOTES "DO NOT ENTER" R5-1, 30" X 30" (TYP.)
4 [Stop for Pedestrian]	DENOTES "STOP FOR PEDESTRIAN CROSSING" R1-6c, 12" X 36"
5 [Student Drop Off Ahead]	DENOTES "STUDENT DROP OFF AHEAD," 12"x18"
6 [Student Drop Off Right]	DENOTES "STUDENT DROP OFF" WITH ARROW TO THE RIGHT, 12"x18"



1 MAIN MONUMENT SIGN LOCATION
SCALE: 1" = 30'



1 PARKING LOT A
SCALE: 1" = 30'



BID ONLY

DRAWN BY: CWF	JOB DATE: 2016	BAR IS ONE INCH ON OFFICIAL DRAWINGS: 1"
APPROVED: JFV	JOB NUMBER: 86150398	IF NOT ONE INCH, ADJUST SCALE ACCORDINGLY.
CAD DATE: 4/1/2016 1:48:56 PM		
CAD FILE: \\hrgmhdns\Data\86150398\CAD\Dwgs\C\86150398_Site_Pln.dwg		

NO.	DATE	BY	REVISION DESCRIPTION

ILLINOIS DESIGN FIRM # 184-001322
420 N. FRONT STREET, SUITE 100
McHENRY, ILLINOIS 60050
PHONE: 815.385.1778 | TOLL FREE: 800.728.7805
FAX: 815.385.1781 | HRGreen.com

McHENRY COUNTY COLLEGE
CRYSTAL LAKE, ILLINOIS

McHENRY COUNTY COLLEGE
PARKING LOT A RECONSTRUCTION
CRYSTAL LAKE, ILLINOIS

CIVIL SITework
DETAIL SITE PLAN PARKING LOT A

SHEET NO.
C-04