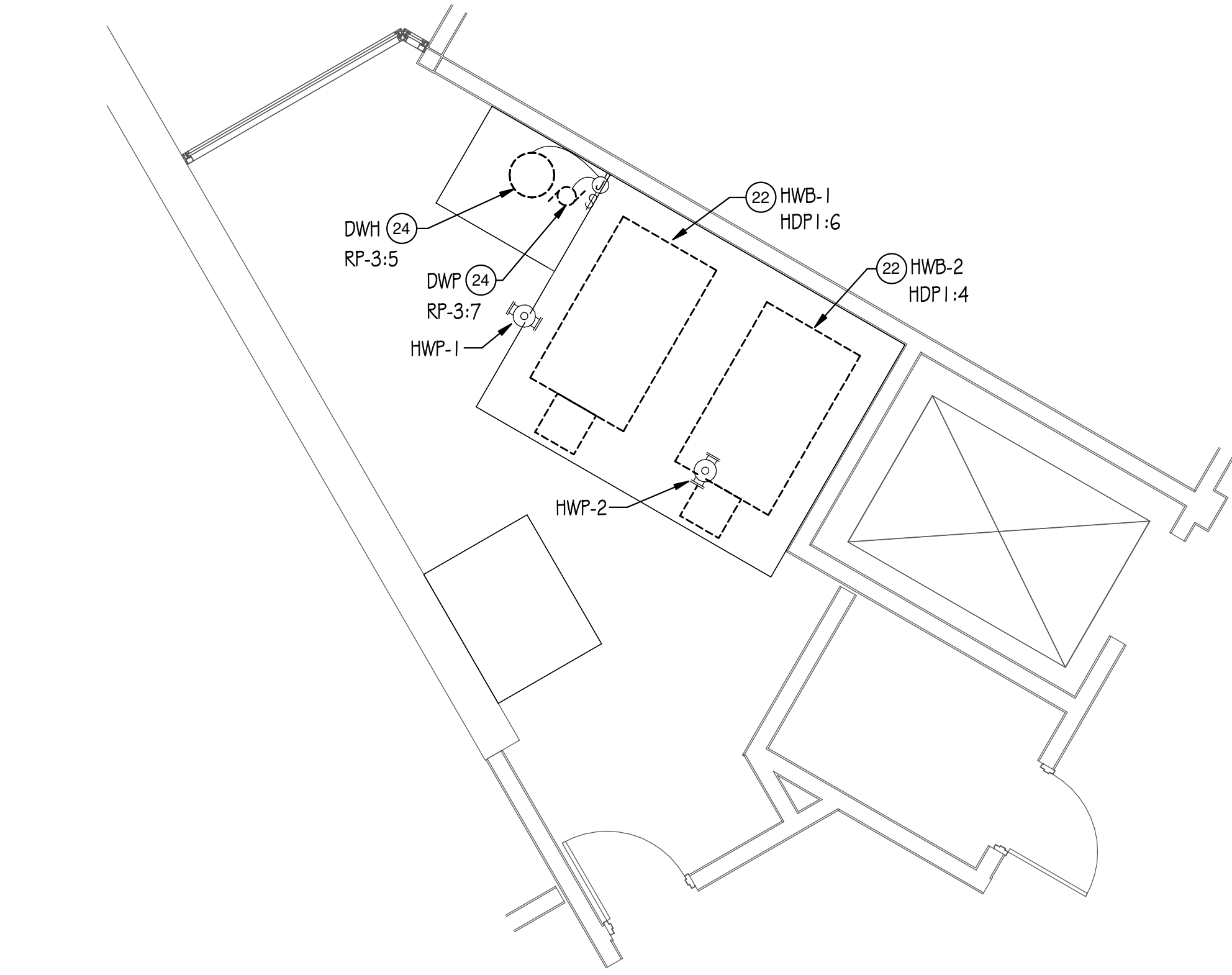
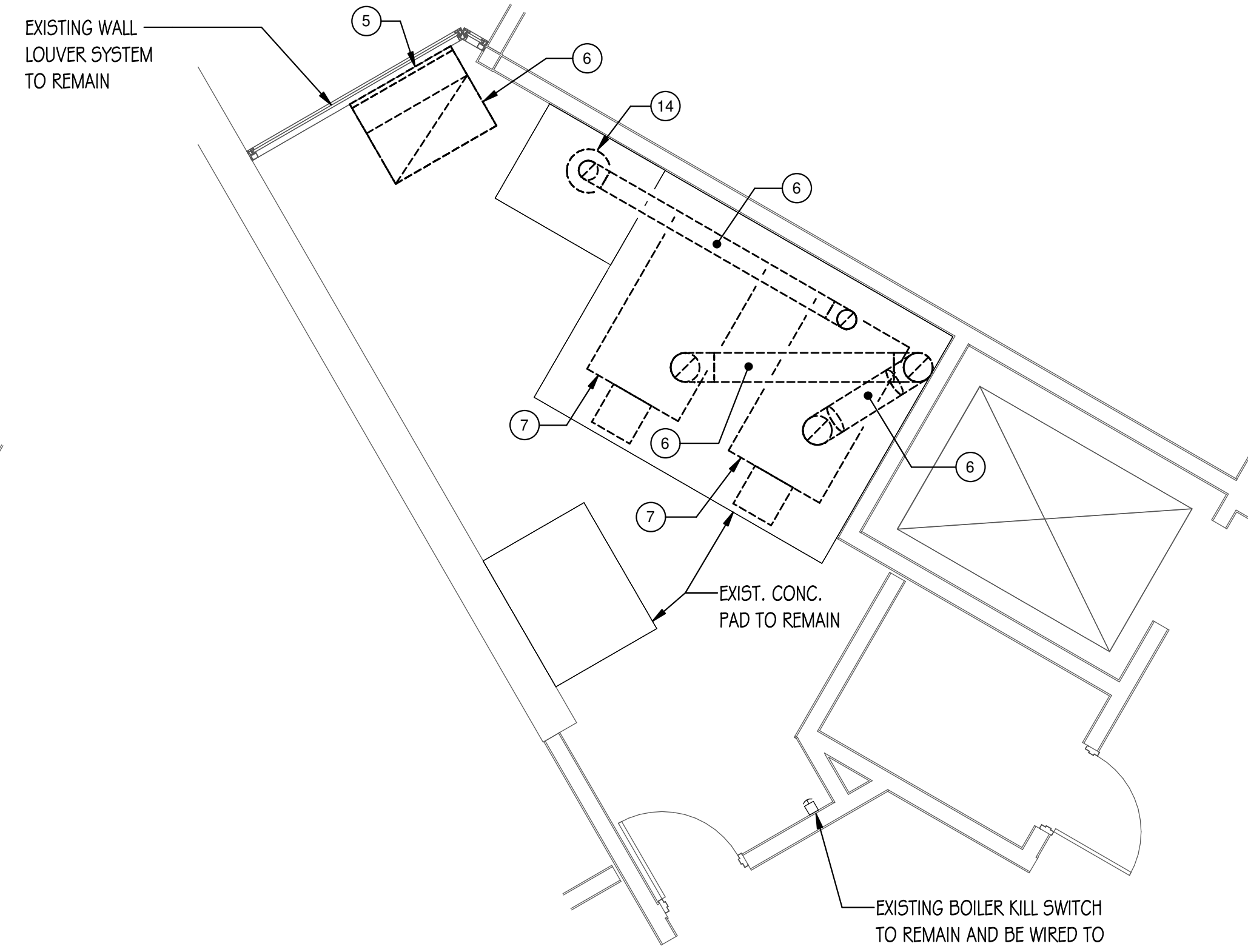


DRAWING NOTES

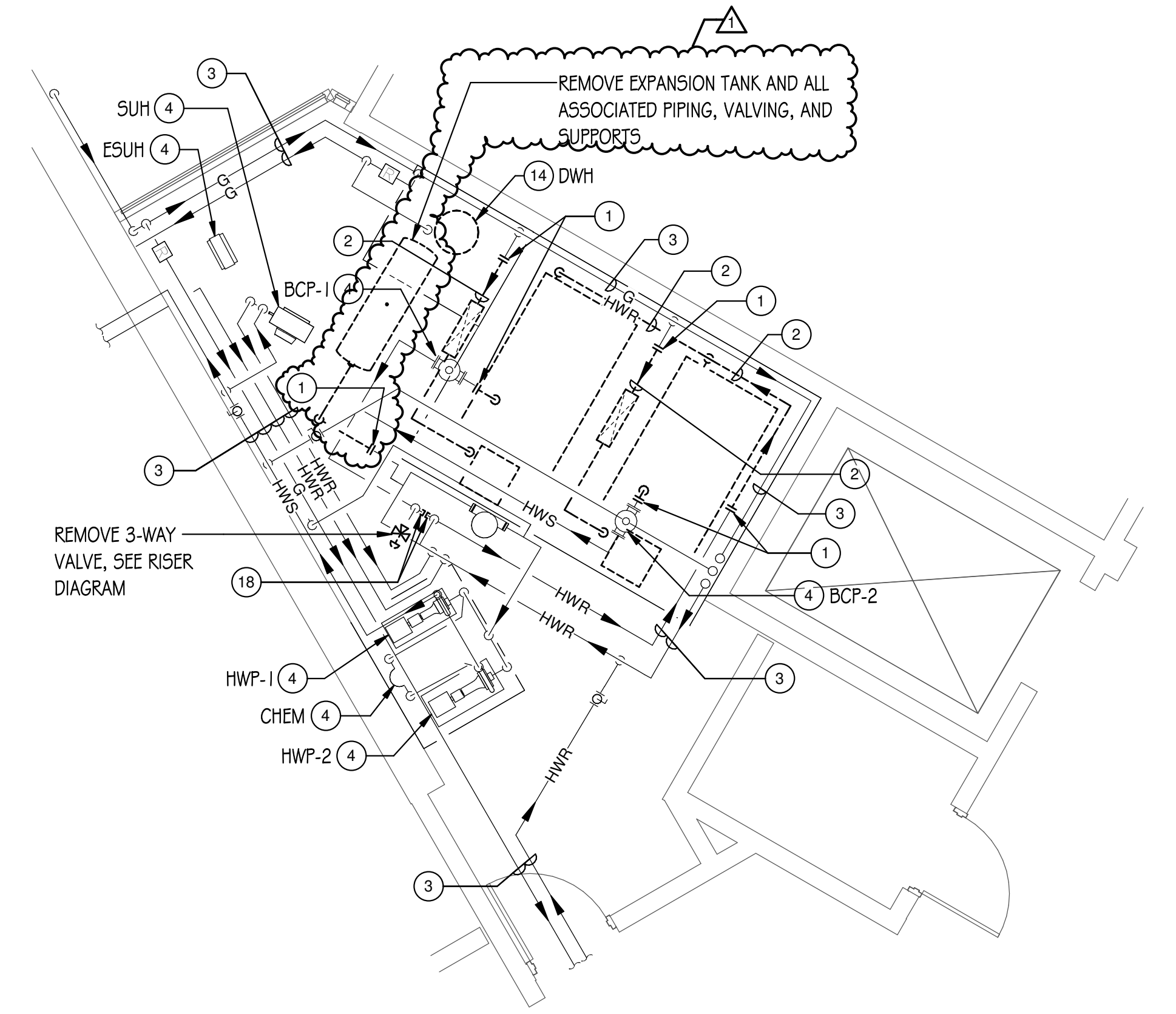
- 1 NEW CONNECTION TO BE MADE AT THIS LOCATION. REMOVE ALL PIPING, VALVING, HANGERS, INSULATION, ETC. SHOWN DASHED BEYOND THIS POINT.
- 2 REMOVE ALL PIPING, VALVING, HANGERS, INSULATION, ETC. SHOWN DASHED.
- 3 EXISTING PIPING AND VALVING TO REMAIN.
- 4 EXISTING HVAC EQUIPMENT TO REMAIN.
- 5 PROVIDE DOUBLE WALL PANEL INSULATED 2" THICK WITH R-14 RIGID BOARD INSULATION AT INTERIOR SIDE OF LOUVER. PAINT SIDE VISIBLE THRU LOUVER FLAT BLACK AND SEAL WEATHER TIGHT.
- 6 REMOVE ALL DUCTWORK, DIFFUSERS, REGISTERS, HANGERS, INSULATION, ETC. SHOWN DASHED.
- 7 REMOVE BOILER AND ALL ASSOCIATED PIPING, VALVING, FLUE, BREECHING, AND CONTROLS.
- 8 TERMINATE DUCT OF SIZE INDICATED THRU WALL WITH WALL HOOD OF COLOR/FINISH TO MATCH ADJACENT CONSTRUCTION AND NECK SIZE TO MATCH CONNECTED DUCTWORK. HOOD TO BE FURNISHED WITHOUT BACKDRAFT DAMPER AND WITH BIRDSCREEN.
- 9 DOUBLE WALL FLUE WITH 6" AL29-4C INNER LINING AND 3049S OUTER JACKET WITH GASKETED JOINTS.
- 10 FLUE UP THRU FLOOR AND ROOF TO TERMINATE WITH RAIN HOOD.
- 11 8"Ø PVC OR INSULATED SHEET METAL COMBUSTION AIR DUCTWORK.
- 12 BALANCE PUMP TO FLOW RATE INDICATED.
- 13 MAKE NEW CONNECTION TO EXISTING PIPING AT THIS LOCATION.
- 14 REMOVE EXISTING GAS FIRED WATER HEATER, DWH TO BE REPLACED AT SAME LOCATION PER NEW WORK PLAN. DISCONNECT AND REMOVE ASSOCIATED IN-LINE RECIRC PUMP. DISCONNECT AND REMOVE ASSOCIATED CWH/HWC PIPING BACK TO A POINT WHERE IT CAN BE EXTENDED TO NEW WATER HEATER PER NEW WORK PLAN.
- 15 PROVIDE NEW GAS FIRED WATER HEATER (DWH-1), TYPE AS INDICATED. EXTEND EXISTING CWH/HWC PIPING TO NEW WATER HEATER. FIELD VERIFY AND MATCH EXISTING PIPE SIZES. EXTEND WATER SUPPLY PIPING TO NEW CONNECTION POINTS OF NEW WATER HEATER. PROVIDE NEW EXPANSION TANK (DWET-1) AND IN-LINE RECIRC PUMP (DWP-1), REFER TO DETAIL FOR PIPING CONFIGURATION. PROVIDE NEW AQUASTAT TO CONTROL PUMP ON/OFF.
- 16 MODIFY EXISTING GAS PIPING AS REQUIRED TO MAKE NEW CONNECTION TO DOMESTIC WATER HEATER.
- 17 MAKE FINAL FULL SIZE CONNECTION TO GAS FIRED EQUIPMENT WITH MIN. 6" DIRT LEG.
- 18 CAP EXISTING PIPE AT LOCATION SHOWN AND REMOVE ALL PIPING, VALVING, HANGERS, INSULATION, ETC. SHOWN DASHED BEYOND THIS POINT.
- 19 FULL SIZE OF EXISTING GAS PIPING.
- 20 4"Ø CPVC COMBUSTION AIR PIPING.
- 21 4"Ø CPVC FLUE PIPING.
- 22 ELECTRICALLY DISCONNECT EXISTING BOILER FOR REMOVAL BY OTHERS. REMOVE ANY ASSOCIATED FIRE ALARM DEVICES, DISCONNECT SWITCHES, STARTERS, AND ALL CONDUITS AND CONDUCTORS BETWEEN UNIT AND PANEL. LEAVE SWITCH AT OFF POSITION AND INDICATE AS "SPARE".
- 23 CONNECT NEW BOILER TO PANEL RP-3. PROVIDE 3 #10 AND 1 #10 IN 3/4"C. PROVIDE TOGGLE DISCONNECT SWITCH WITHIN SIGHT OF BOILER. VERIFY CIRCUIT AVAILABILITY IN FIELD.
- 24 ELECTRICALLY DISCONNECT EXISTING EQUIPMENT FOR REMOVAL. EXISTING TOGGLE SWITCH, CONDUITS, AND CONDUCTORS SHALL REMAIN TO FEED NEW MECHANICAL EQUIPMENT.
- 25 RECONNECT NEW UNIT TO EXISTING CIRCUIT PREVIOUSLY SERVING REMOVED EQUIPMENT. EXTEND/MODIFY EXISTING RACEWAY AND CONDUCTORS AS REQUIRED. VERIFY CIRCUIT IN FIELD.
- 26 REMOVE EXISTING SPARE 20A/1P CIRCUIT BREAKERS IN SPACES 27,28,29,30 AND TURN OVER TO OWNER AS SPARES. PROVIDE (2) NEW SIEMENS 30A/2P CIRCUIT BREAKERS IN THOSE SPACES FOR NEW REPLACEMENT BOILERS. VERIFY EXISTING SPACES ARE UNLUSED IN FIELD.



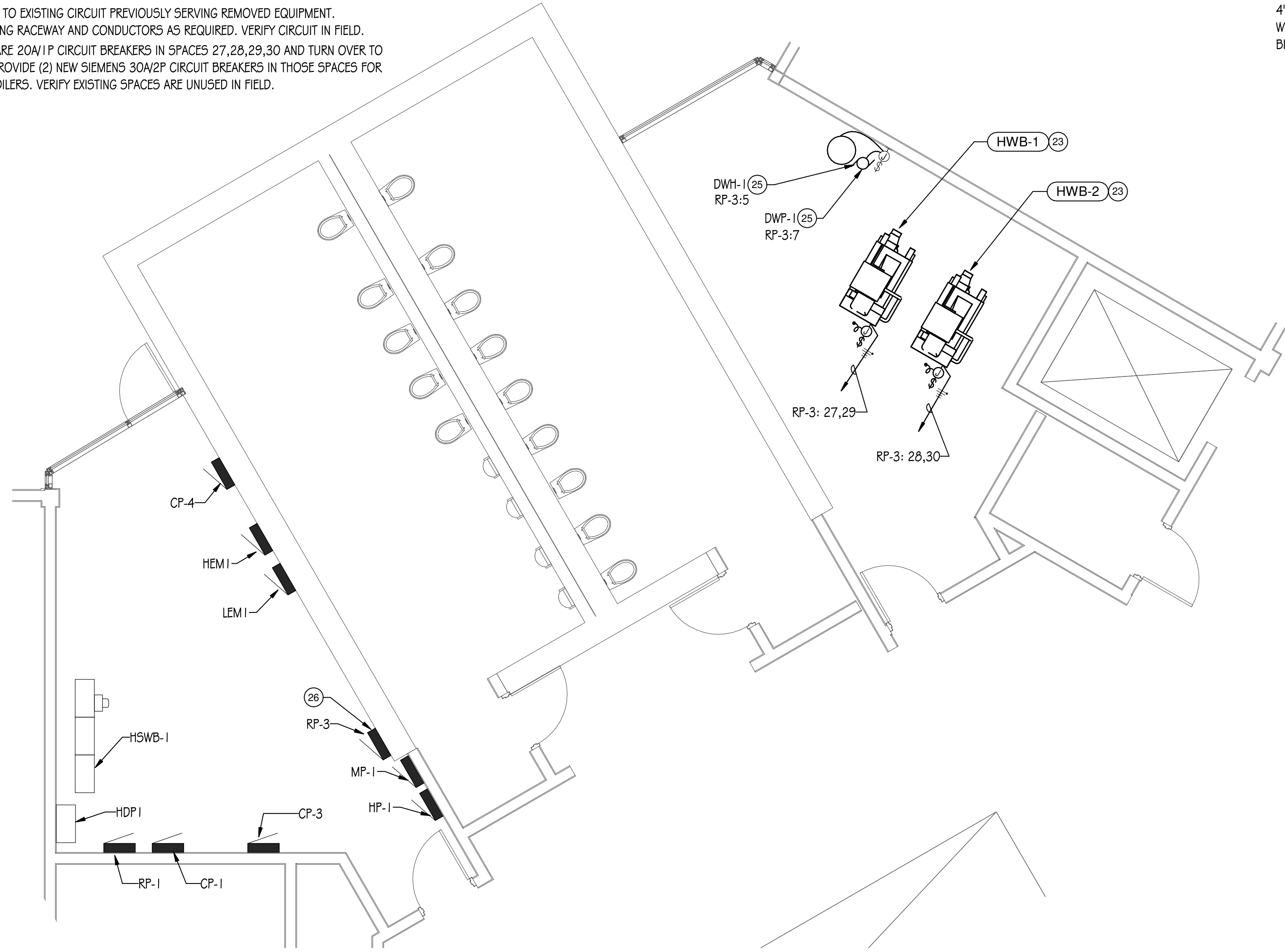
5 BOILER ROOM ELECTRICAL DEMOLITION PLAN
1/4" = 1'-0"



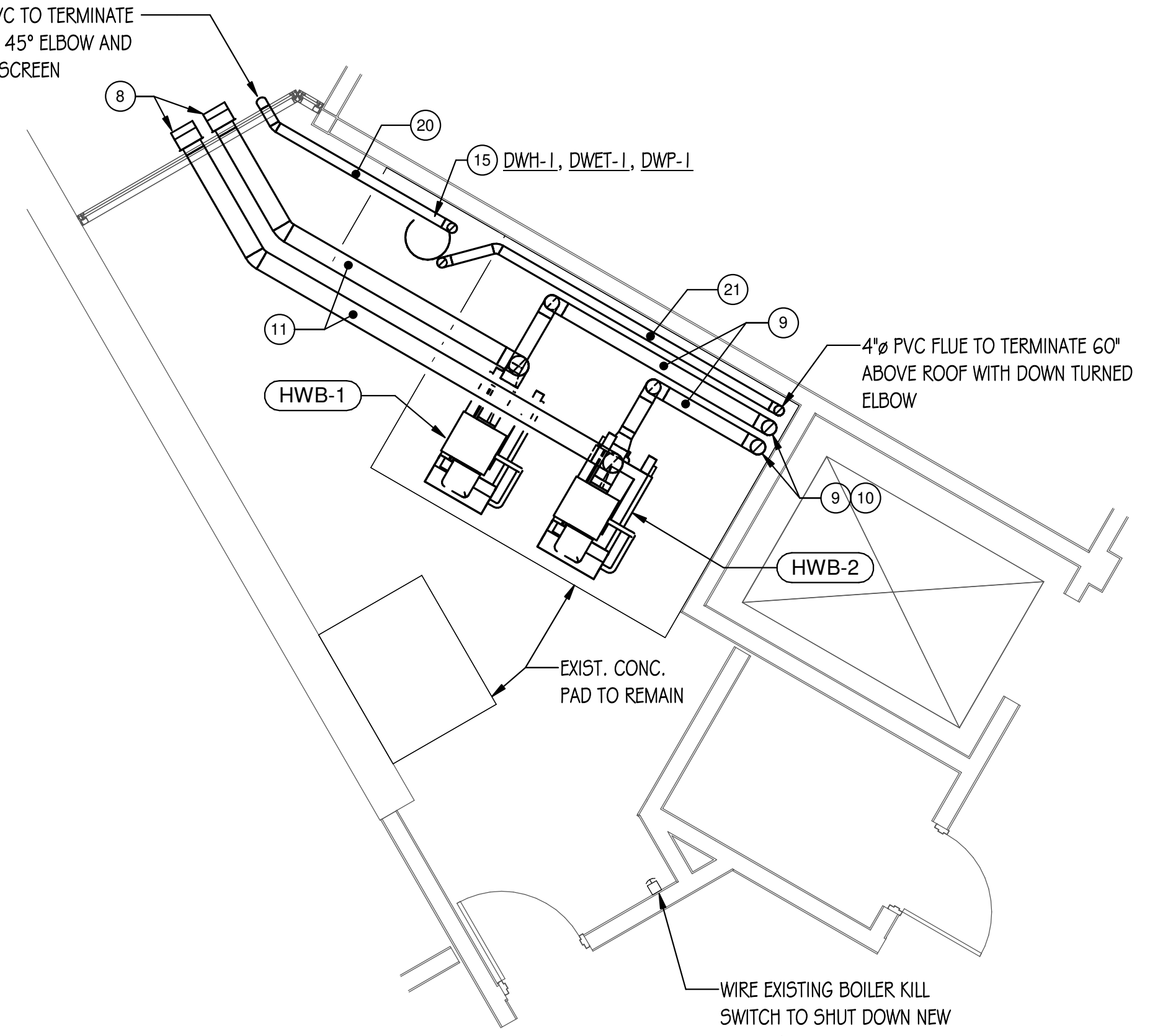
1 BOILER ROOM VENTILATION DEMOLITION PLAN
1/4" = 1'-0"



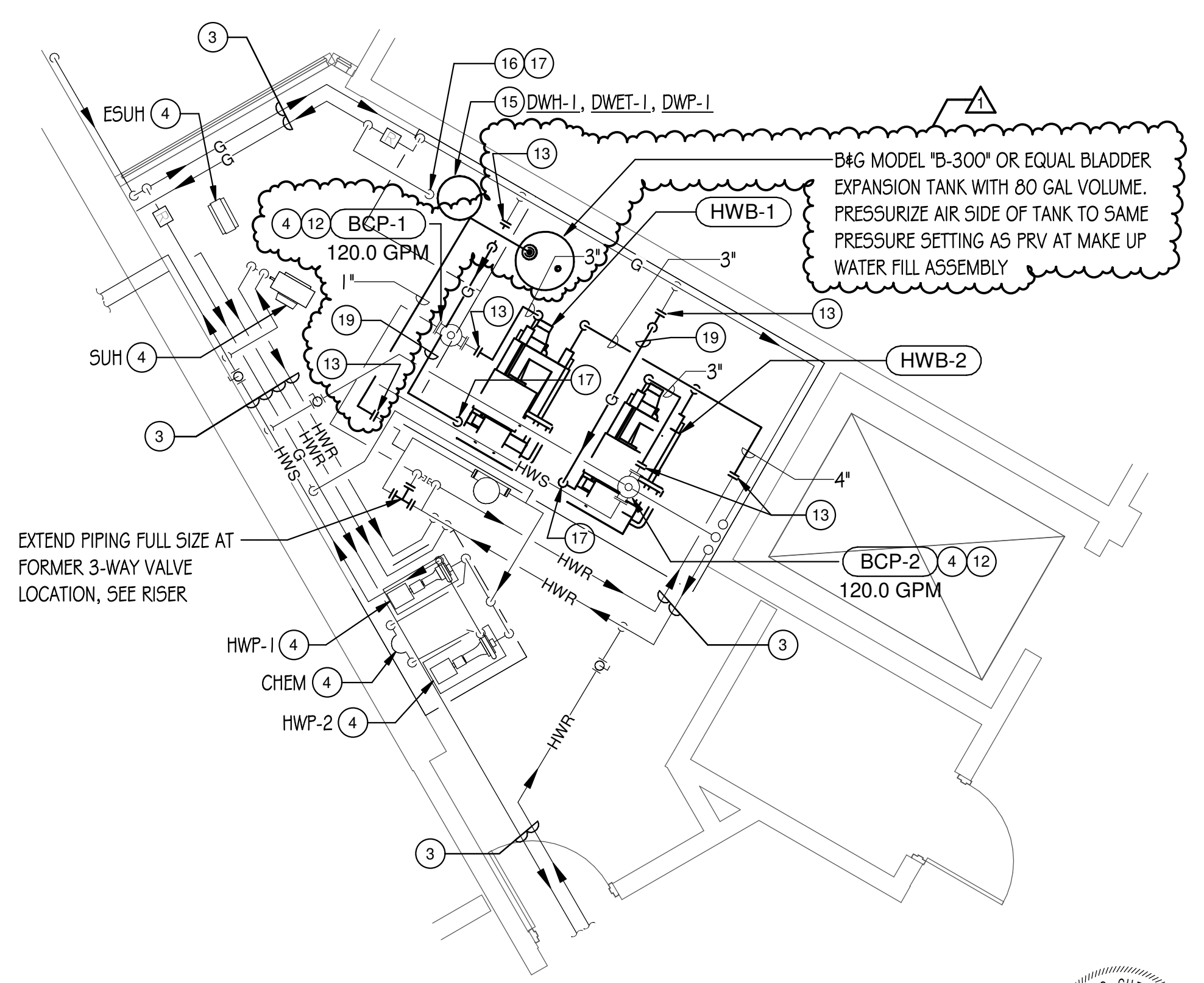
3 BOILER ROOM PIPING DEMOLITION PLAN
1/4" = 1'-0"



6 BOILER ROOM ELECTRICAL PLAN
1/4" = 1'-0"



2 BOILER ROOM VENTILATION PLAN
1/4" = 1'-0"



4 BOILER ROOM PIPING PLAN
1/4" = 1'-0"



2025 BOILER REPLACEMENTS BUILDING 'E' McHENRY COUNTY COLLEGE

8900 NORTHWEST HWY #14 CRYSTAL LAKE, IL 60012

DATE	DESCRIPTION
03/07/25	BID/PERMIT
03/13/25	ADDENDUM #1

Mechanical - Electrical Engineers
1216 Tower Road
Schaumburg, Illinois 60173
847.882.2010
Fax 847.882.2201

Sheet Title
MECHANICAL/ELECTRICAL FLOOR PLANS

PROJ. MGR: Checker
DRAWN BY: Author
CHECKED BY: Checker

ME-2