



McHenry County College Environmental Scan 2016-2017

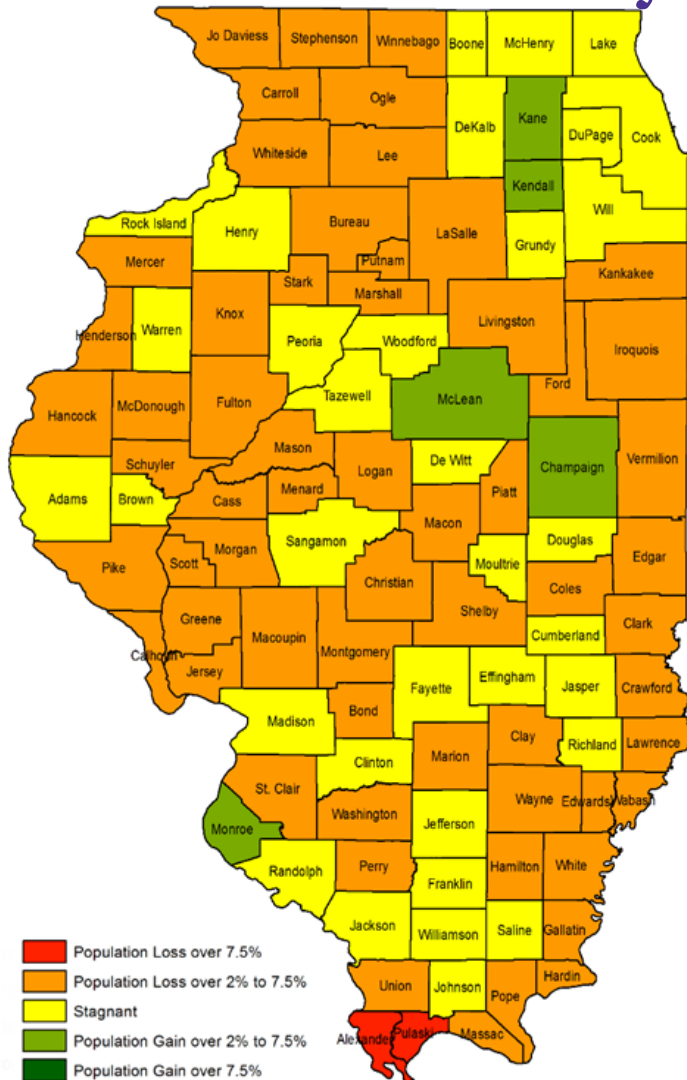
*Study Conducted by Northern Illinois University
Brian Harger, Sherrie Taylor*

2016 Update – MCC Environmental Scan

- Northern Illinois University and MCC Institutional Research and Advancement
- New Scan Conducted: Fall 2016
- Last Scan: Fall 2012



State of the County – Population Change 2014-2015

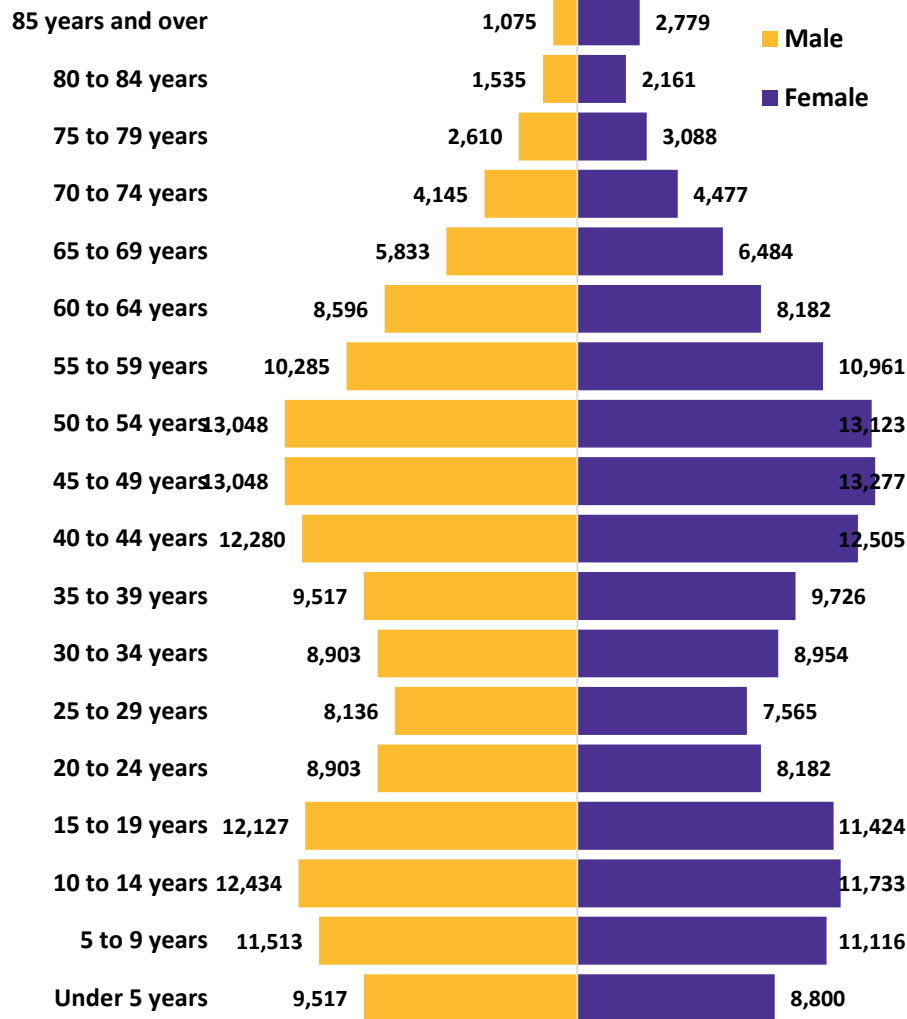


- Declining population
- Lost approximately 100k
- Since 2010 stagnant

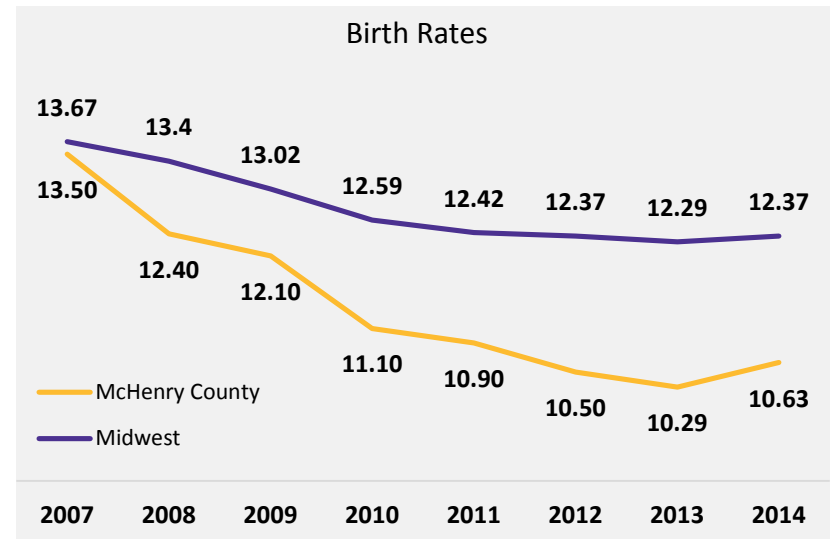


State of the County – Age Groups

Age Groups in McHenry County, Illinois - 2014



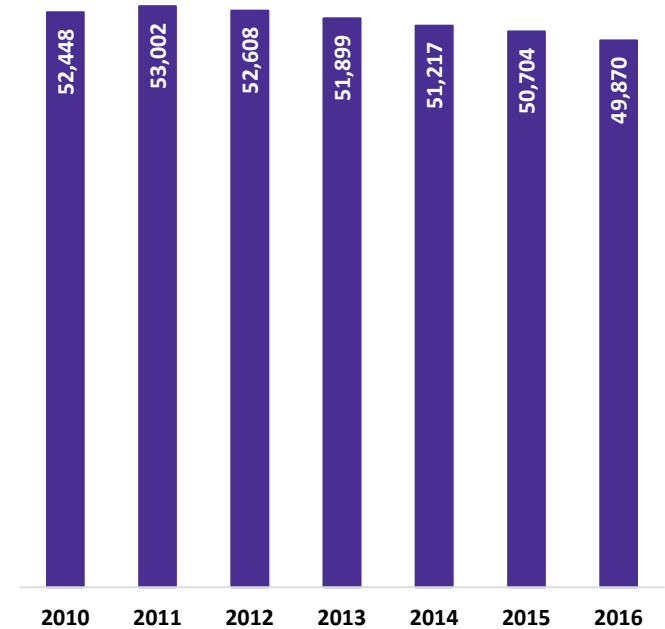
- Baby Boomers
- College Bound
- Birth Rate



State of the County – School Enrollment Trends

District Enrollment	2010	2011	2012	2013	2014	2015	2016
Cons SD 158	8,672	9,180	9,287	9,305	9,436	9,475	9,473
Crystal Lake CCSD 47	8,540	8,409	8,214	8,092	7,892	7,765	7,604
CHSD 155	7,137	7,049	7,009	6,914	6,730	6,634	6,515
Woodstock CUSD 200	6,142	6,185	6,408	6,512	6,498	6,505	6,400
McHenry CCSD 15	4,878	4,897	4,846	4,717	4,725	4,654	4,519
Harvard CUSD 50	2,295	2,456	2,440	2,413	2,423	2,502	2,518
Cary CCSD 26	3,109	3,002	2,796	2,655	2,535	2,489	2,438
McHenry CHSD 156	2,511	2,548	2,537	2,464	2,340	2,370	2,318
Johnsburg CUSD 12	2,388	2,365	2,334	2,247	2,157	2,073	1,976
Nippersink SD 2	1,475	1,467	1,400	1,336	1,270	1,228	1,183
Marengo-Union E Cons D 165	1,016	1,060	1,083	1,121	1,102	1,069	1,036
Marengo CHSD 154	869	831	820	772	775	745	772
Prairie Grove CSD 46	957	975	915	888	850	788	758
Richmond-Burton CHSD 157	772	794	788	766	781	758	715
Fox River Grove Cons SD 3	518	528	508	503	512	475	491
Alden Hebron SD 19	426	457	450	444	450	456	425
Harrison SD 36	433	491	473	442	440	408	419
Riley CCSD 18	310	308	300	308	301	310	310
TOTAL	52,448	53,002	52,608	51,899	51,217	50,704	49,870

Enrollment in McHenry County Public Schools



State of the County – Immigration and Naturalization

Citizenship Status	2010	2010 %	2014	2014 %
McHenry County Residents	306,050	100.0%	307,357	100.0%
U.S. citizen, born in the United States	274,165	89.5%	275,257	89.5%
U.S. citizen, born in Puerto Rico or U.S. Island Areas	384	0.3%	355	0.2%
U.S. citizen, born abroad of American parent(s)	1,654	0.8%	1,914	0.6%
U.S. citizen by naturalization	13,191	4.3%	14,996	5.1%
Not a U.S. citizen	16,656	5.2%	14,835	4.7%

Source: U.S. Census Bureau, American Community Survey, Five Year Estimates

Native vs Foreign Born Population	Illinois	Chicago MSA	McHenry County
Native population	86.1%	82.0%	90.5% (278,576 people)
Foreign Born and Naturalized citizens	6.5%	8.9%	4.6% (14,219 people)
Foreign Born and Not a U.S. citizen	7.4%	9.1%	4.9% (15,093 people)



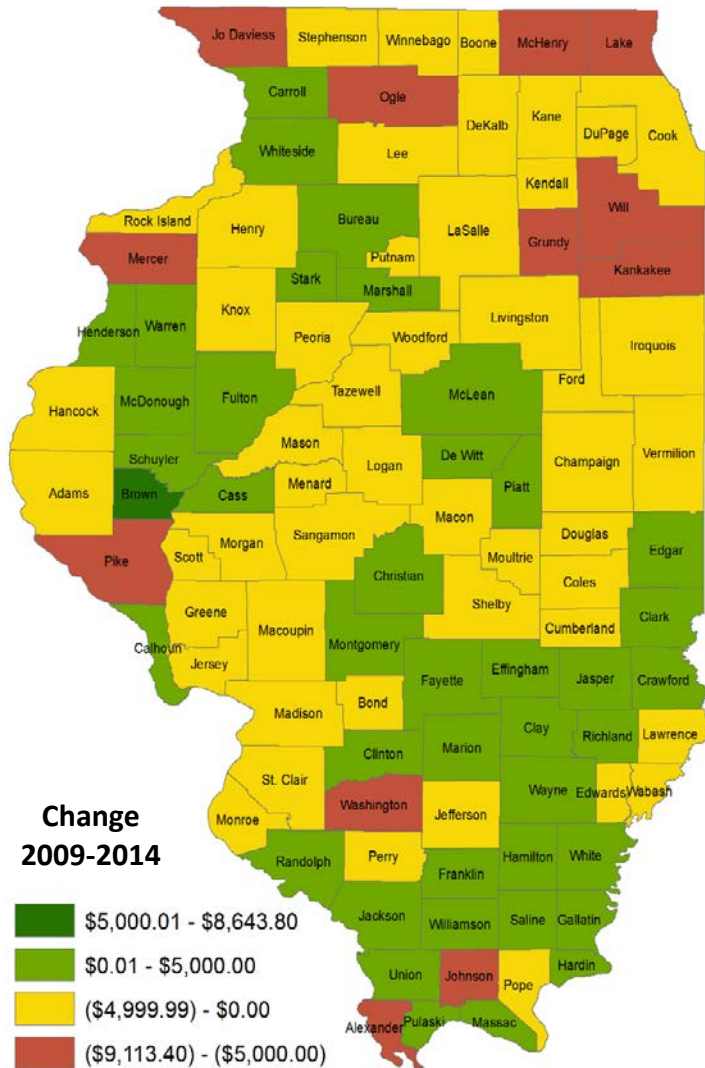
State of the County – Hispanic or Latino Community

Percentage of Latino Residents	Population	Latinos	% Latinos
Kane	521,874	162,048	31.1%
Cook	5,227,827	1,281,217	24.5%
Lake	703,170	143,841	20.5%
Boone	54,005	10,943	20.3%
Cass	13,440	2,432	18.1%
Kendall	118,194	19,155	16.2%
Will	682,108	109,841	16.1%
DuPage	926,485	127,142	13.7%
Rock Island	146,964	17,686	12.0%
McHenry	307,888	36,623	11.9%

Source: US Census Bureau, American Community Survey, 2014 5 Year, Table B03003.



State of the County – Median Household Income



Source: U.S. Census Bureau, American Community Survey 2014.

McHenry County residents lost \$8,700 in buying power.

Adjusted income of \$85,045 in 2009 to \$76,345 in 2014.



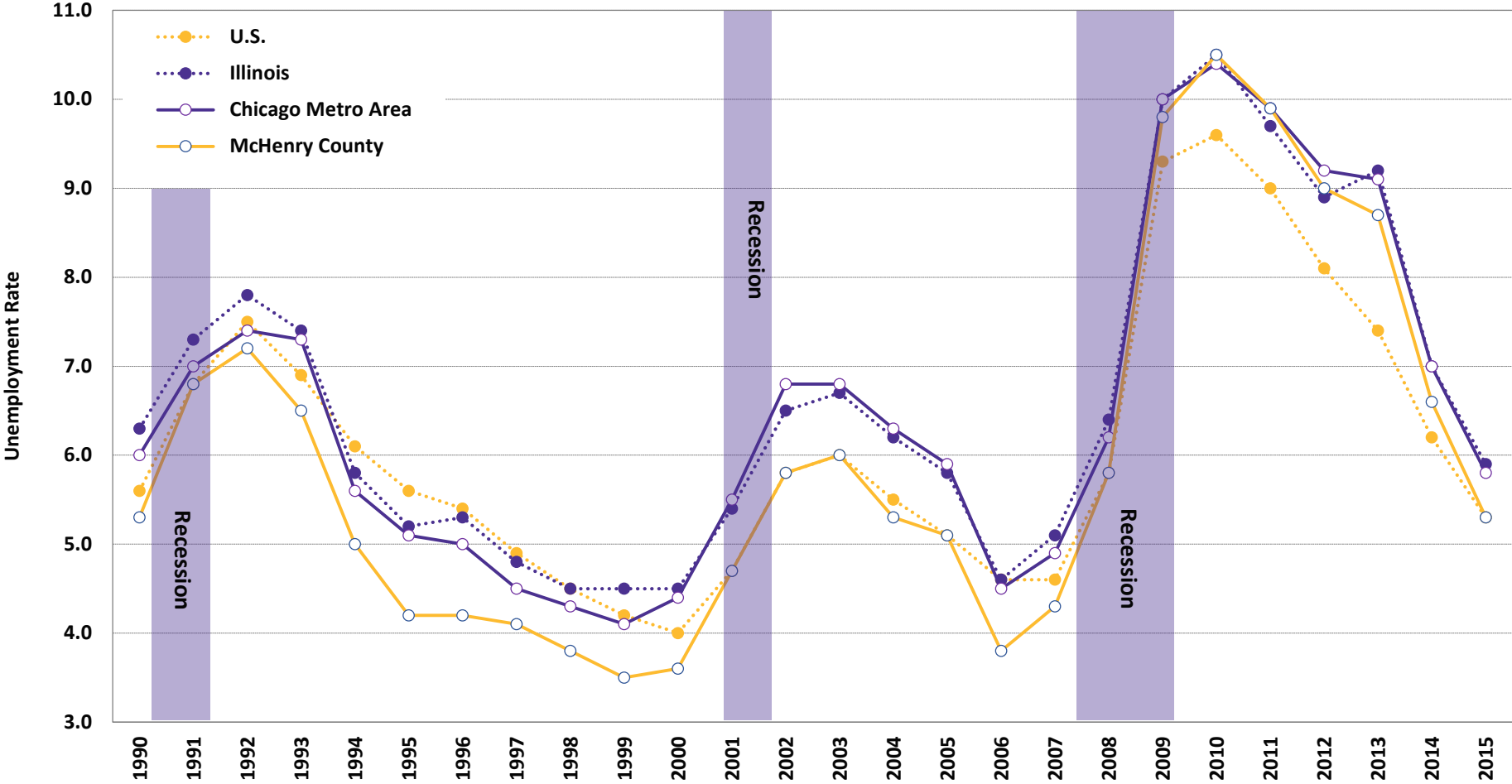
State of the County – Per Capita Annual Income



Note: Figures are in constant (2014) dollars.
 Source: Bureau of Economic Analysis, 2016.



State of the County – Unemployment Trends



Source: U.S. Bureau of Labor Statistics, 2016.

Change in Non-Farm Employment through Recent Economic Cycles

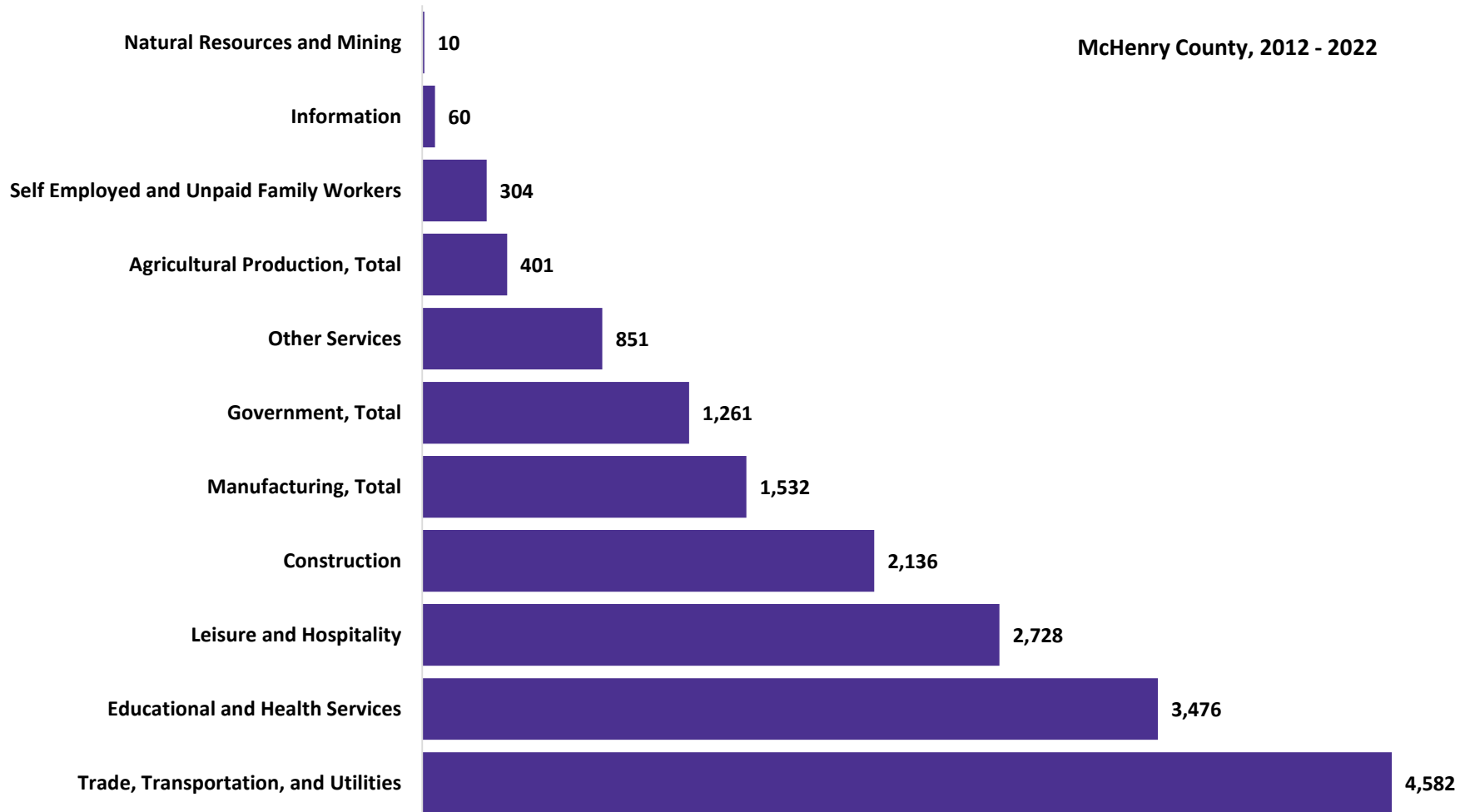
Area Name	Expansion 11/82-6/90	Recession 6/90- 3/91	Expansion 3/91- 2/01	Recession 2/01- 11/01	Expansion 11/01- 11/07	Recession 11/07- 6/09	Expansion 6/09- 9/16
McHenry County	58.6%	0.5%	38.9%	-0.2%	23.3%	-4.6%	-0.9
Chicago Metro	19.3%	-2.9%	15.2%	-2.0%	5.7%	-5.2%	4.8
Illinois	15.1%	-3.3%	11.7%	-1.3%	5.9%	-5.9%	3.0
U.S.	20.0%	-1.1%	17.0%	-1.0%	7.6%	-4.5%	8.5

Source: U.S. Bureau of Labor Statistics, 2016.



Job-Ready Skill Development Industry Employment Projections

McHenry County, 2012 - 2022



Job-Ready Skill Development Occupational Employment Projections

Projected Growth of Occupations in McHenry County	2012	2022	Growth	Replacements	Total Jobs	Median Salary
Total, All Industries	109,802	132,201	22,399	25,990	48,980	\$33,184
Sales & Related	12,400	14,946	2,546	3,800	6,350	\$22,670
Office & Administrative Support	14,041	16,525	2,484	3,150	5,760	\$33,032
Food Preparation & Serving	8,259	10,542	2,283	3,050	5,330	\$19,228
Production	10,731	12,305	1,574	2,140	3,880	\$32,036
Transportation & Material Moving	7,594	9,456	1,862	1,850	3,710	\$32,407
Construction & Extraction	6,502	8,442	1,940	1,120	3,060	\$66,032
Management	8,789	9,742	953	1,700	2,950	\$89,130
Education, Training & Library	7,959	8,747	788	1,760	2,550	\$41,604
Healthcare Practitioners & Technical	4,825	5,968	1,143	1,000	2,140	\$56,676
Building & Grounds Cleaning & Maint.	4,464	5,599	1,135	930	2,070	\$23,888
Installation, Maintenance & Repair	3,910	4,821	911	900	1,810	\$46,038
Business & Financial Operations	3,499	4,536	1,037	690	1,730	\$66,359
Personal Care & Service	4,003	4,823	820	910	1,730	\$21,889
Protective Service	2,524	3,085	561	740	1,300	\$40,795
Healthcare Support	2,391	3,093	702	460	1,160	\$30,215
Computer & Mathematical	1,514	2,016	502	250	750	\$81,928
Architecture & Engineering	1,350	1,658	308	320	630	\$69,834
Arts/Design/Entertainment, Sports/Media	1,551	1,756	205	370	580	\$25,199
Farming, Fishing & Forestry	1,204	1,412	208	350	560	\$24,986
Community & Social Services	1,294	1,538	244	300	540	\$35,225
Legal Services	603	717	114	100	210	\$64,356
Life, Physical & Social Science	395	474	79	110	190	\$58,874

- Sales & Related top occupation for job openings.
- Construction & Extraction making a comeback.
- Management expected to have turn-around.
- Healthcare fields surprisingly low on the list.



Job-Ready Skill Development Top Occupations in Job Ads

McHenry County, Illinois (June, 2016) Occupation Title/SOC Code	Job Postings
Heavy and Tractor-Trailer Truck Drivers (53-3032)	481
Retail Salespersons (41-2031)	207
Registered Nurses (29-1141)	148
First-Line Supervisors of Retail Sales Workers (41-1011)	110
Customer Service Representatives (43-4051)	107
Sales Representatives, Wholesale and Manufacturing, Except Technical and Scientific Products (41-4012)	89
Speech-Language Pathologists (29-1127)	76
Combined Food Preparation and Serving Workers, Including Fast Food (35-3021)	68
First-Line Supervisors of Food Preparation and Serving Workers (35-1012)	58
Production Workers, All Other (51-9199)	51
Laborers and Freight, Stock, and Material Movers, Hand (53-7062)	46
Managers, All Other (11-9199)	46
Maintenance and Repair Workers, General (49-9071)	45
Merchandise Displayers and Window Trimmers (27-1026)	41
Occupational Therapists (29-1122)	40
Physical Therapists (29-1123)	40
Security Guards (33-9032)	40
Accountants and Auditors (13-2011)	38
Preschool Teachers, Except Special Education (25-2011)	38
Stock Clerks and Order Fillers (43-5081)	37

Source: Labor Insight™, Burning Glass Technologies, 2016.



The Case for Education

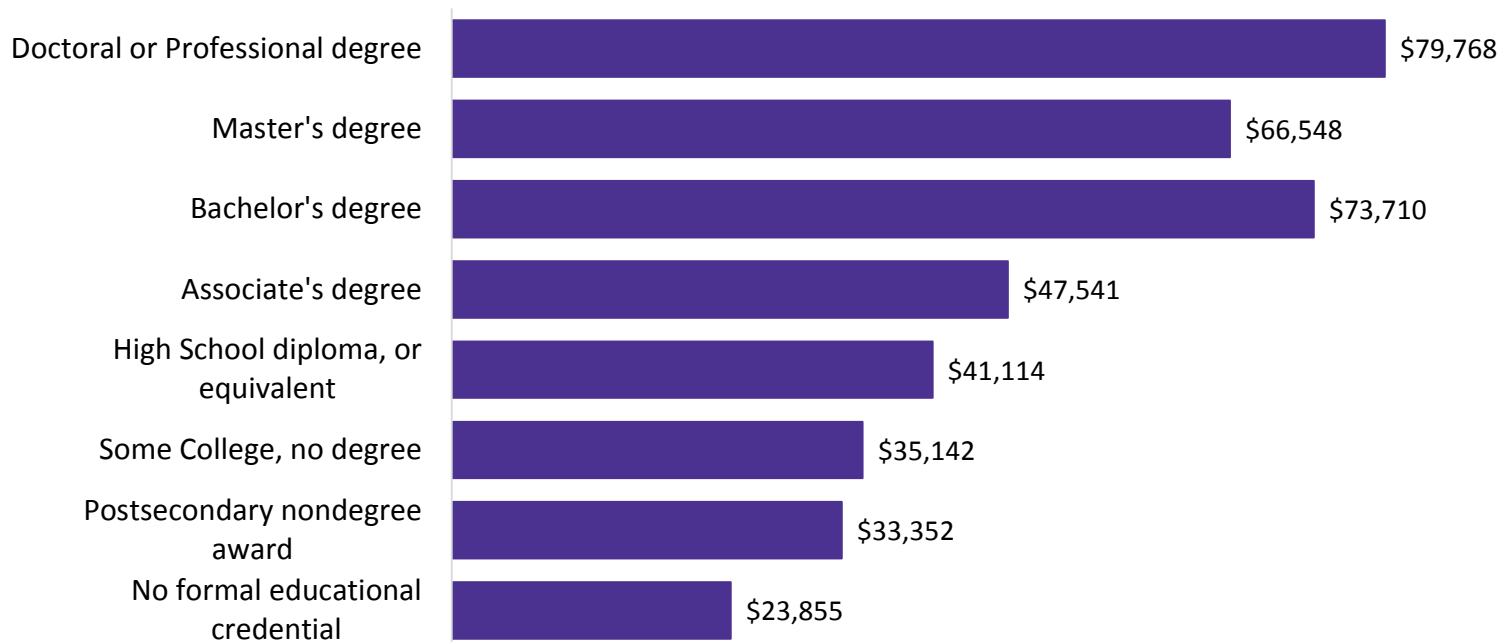
Education Attainment by Age

Age Group			No diploma	HS grad or GED	Some college	Higher degree	Associate's degree	Bachelor's degree	Grad or Prof degree
18 to 24 years:	McHenry County	Estimate	3,764	8,457	9,075	4,029	--	--	--
		% Age Category	14.9%	33.4%	35.8%	15.9%	--	--	--
	Illinois	% Age Category	14.1%	27.8%	40.1%	18.0%	--	--	--
25 to 34 years:	McHenry County	Estimate	2,560	7,405	8,972	--	3,316	8,561	2,865
		% Age Category	7.6%	22.0%	26.6%	--	9.8%	25.4%	8.5%
	Illinois	% Age Category	9.9%	21.7%	21.7%	--	8.0%	26.5%	12.2%
35 to 44 years:	McHenry County	Estimate	3,153	8,776	10,785	--	4,368	11,570	5,292
		% Age Category	7.2%	20.0%	24.5%	--	9.9%	26.3%	12.0%
	Illinois	% Age Category	11.0%	23.1%	20.8%	--	8.6%	22.4%	14.1%
45 to 64 years:	McHenry County	Estimate	5,685	24,389	22,938	--	8,080	19,748	9,688
		% Age Category	6.3%	26.9%	25.3%	--	8.9%	21.8%	10.7%
	Illinois	% Age Category	10.9%	27.4%	22.4%	--	8.4%	18.7%	12.3%
65 years and over:	McHenry County	Estimate	4,445	13,179	7,511	--	1,567	4,311	3,200
		% Age Category	13.0%	38.5%	22.0%	--	4.6%	12.6%	9.4%
	Illinois	% Age Category	19.5%	35.8%	18.7%	--	4.1%	12.0%	9.9%

Green text indicates the highest percentage in each age group and education attainment level

The Case for Education

McHenry County Weighted Median Wage by Education Level



Source: Illinois Department of Employment Security, Occupational Employment Statistics, 2015.

