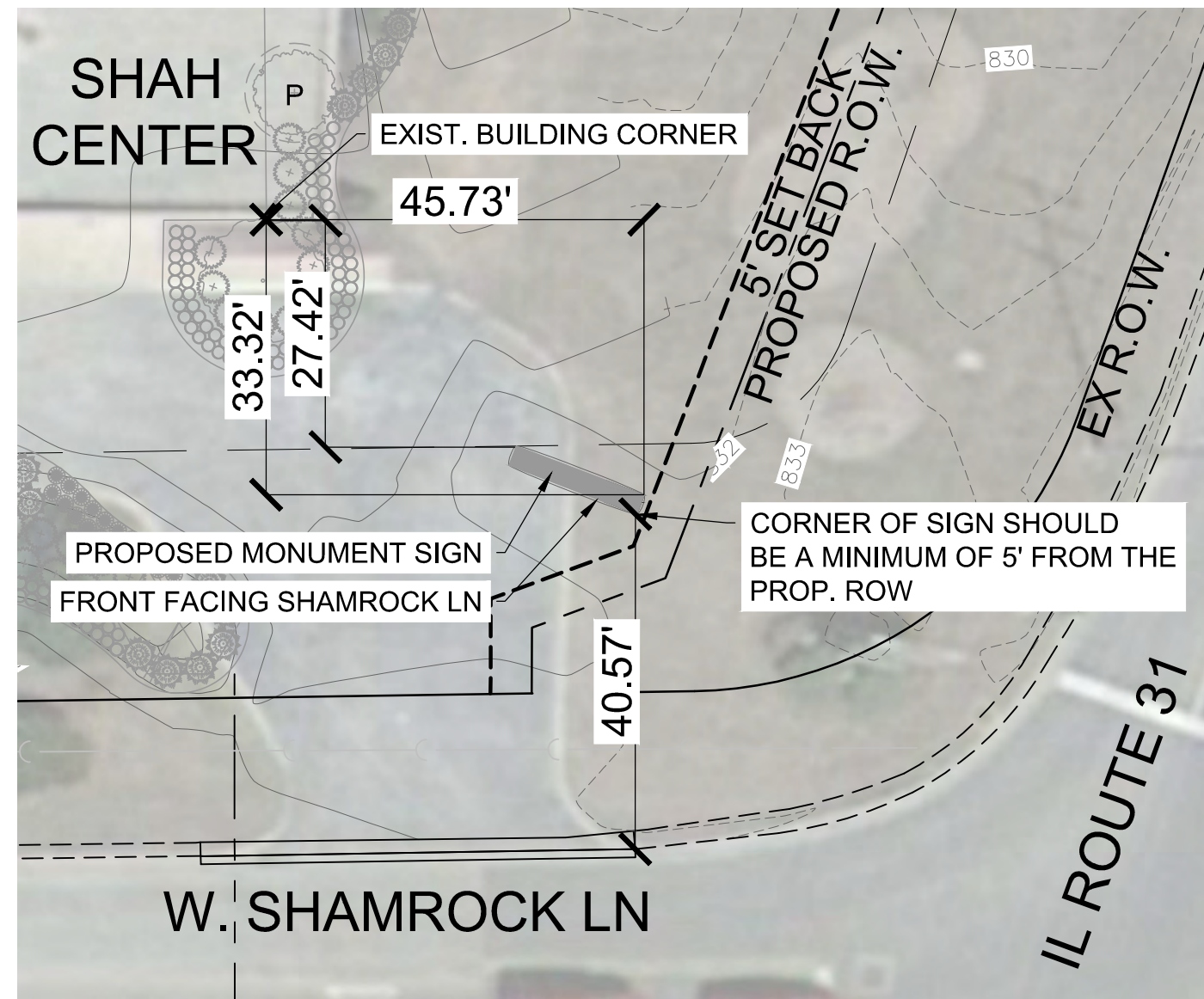
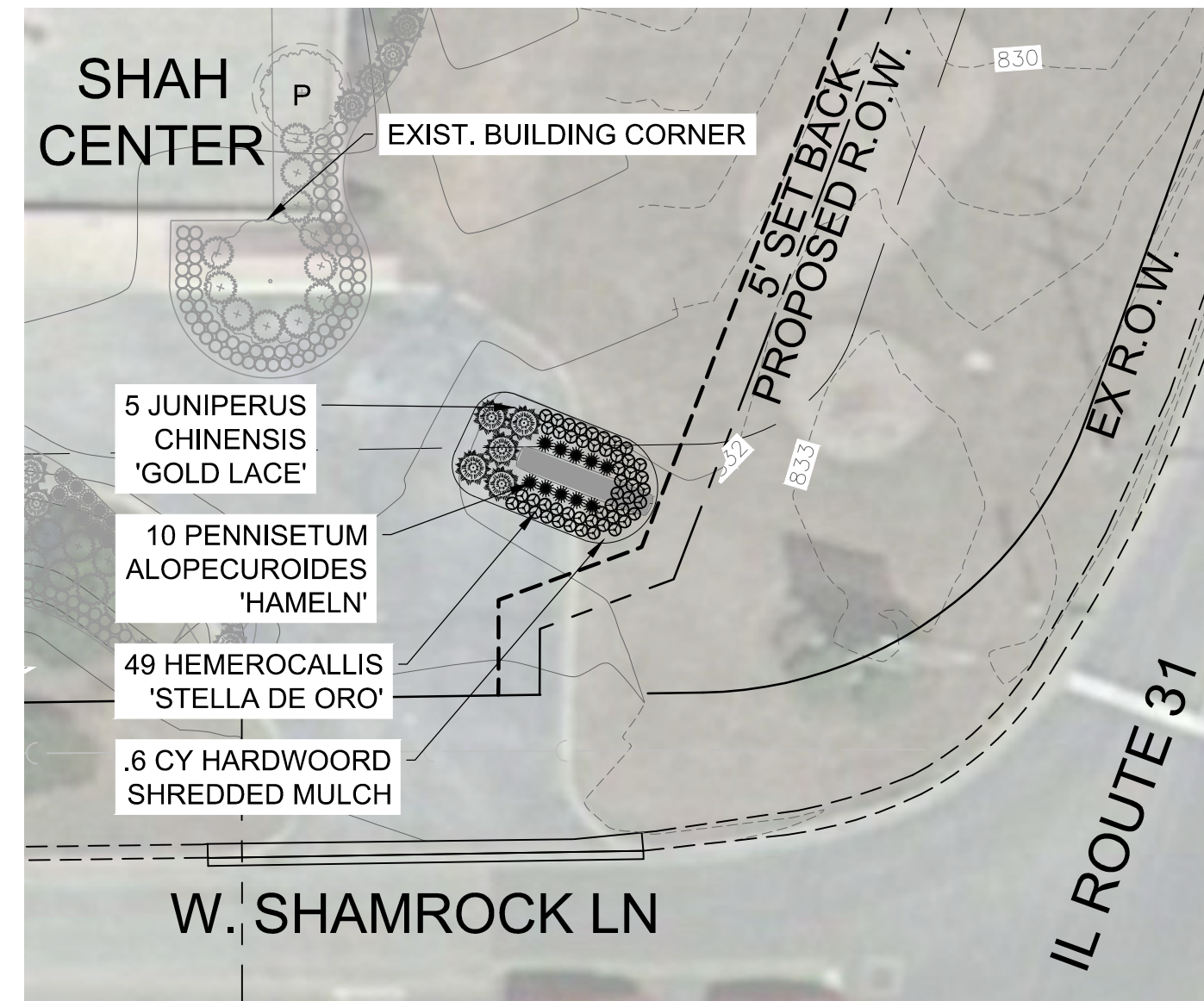


FREE STANDING MONUMENT SIGN @ RT 31 ENTRANCE



LAYOUT AND DIMENSIONING PLAN SCALE: 1" = 20'



LANDSCAPE PLAN-BID ALTERNATIVE SCALE: 1" = 20'

NOTES AND SPECIFICATIONS

LOCATION

- LOCATE FREE STANDING MONUMENT SIGN 5' OUTSIDE OF BUT ADJACENT TO THE PROPOSED IL ROUTE 31 RIGHT OF WAY AS SHOWN ON THE PLAN VIEW EXHIBIT.
- FINAL SIGN LOCATION TO BE STAKED IN THE FIELD AND TO BE REVIEWED AND APPROVED BY MCHENRY COUNTY COLLEGE PRIOR TO INSTALLATION.

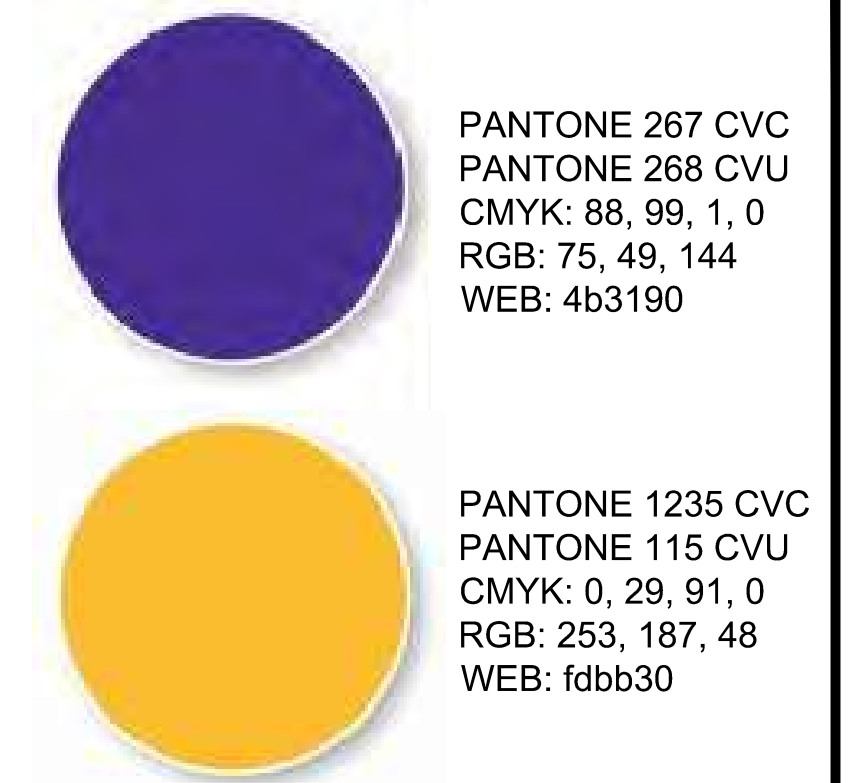
TYPE AND DIMENSIONS OF SIGN

- FREE STANDING MONUMENT SIGN TO HAVE TWO IDENTICAL SIGN FACES WITH A WHITE BOARDER SEPARATING EACH FACE AS SHOWN IN THE SIGN ELEVATION DIAGRAM. SIGN SHELL TO BE MANUFACTURED OUT OF SHEET ALUMINUM AND COMPLETELY ENCLOSED AND SEALED WITH APPROPRIATE WATERPROOFING SEALANT AND FASTENERS. FRAMING AND STRUCTURAL SUPPORT TO BE MANUFACTURED OUT OF STEEL AND ALUMINUM AND DESIGNED/ENGINEERED BY THE SIGN MANUFACTURER. SHOP DRAWINGS DEPICTING STRUCTURAL DESIGN INTENT, WIND LOAD, SNOW LOAD, AND ELECTRICAL/LIGHTING DESIGN TO BE SUBMITTED TO HR GREEN FOR APPROVAL. ALL STRUCTURAL DESIGNS SHALL BE SIGNED/SEALED BY A LICENSED STRUCTURAL ENGINEER.
- MCHENRY COUNTY COLLEGE LOGO AND PANTONE COLOR SCHEME TO BE USED. SIGN SHALL BE PAINTED WITH A HIGH QUALITY ENAMEL FINISH, SMOOTH AND FREE OF BLEMISHES.
- "SHAH CENTER" TEXT SHALL BE ARIAL BOLD FONT, 1' TALL LETTERING, AND SHALL HAVE A 1/2" BLACK OUTLINE AS INDICATED ON THE SIGN ELEVATION DIAGRAM. ALL TEXT, INCLUDING THE MCHENRY COUNTY COLLEGE LOGO, SHALL BE MANUFACTURED OUT OF TRANSLUCENT/TRUE WHITE POLY CARBONATE AND ILLUMINATED (BACKLIT) FROM INSIDE THE SIGN. ALL TEXT IS TO HAVE A CRISP LOOK WHEN ILLUMINATED AND HAVE A HIGH CONTRAST EFFECT BOTH DURING THE DAY AND AT NIGHT. CONTRACTOR TO PROVIDE SHOP DRAWINGS FOR PROPOSED LUMENS TO PRODUCE THIS EFFECT.
- SHOP DRAWINGS DEPICTING TEXT AND LOGO DESIGN/MANUFACTURING INTENT SHALL BE SUBMITTED TO HR GREEN FOR APPROVAL.
- TWO, 4'X10', 19 MM, FULL-COLOR LED DISPLAYS SHALL BE MOUNTED AND FRAMED IN SUCH A MANNER THAT THEY PROTRUDE 2 INCHES - 3 INCHES FROM THE SIGN FACE. LED MANUFACTURER TO BE CONSULTED BY SIGN MANUFACTURER FOR MOUNTING TECHNIQUES. SPECIFICATIONS AND SHOP DRAWINGS FROM THE LED MANUFACTURER SHALL BE SUBMITTED TO BOTH HR GREEN AND THE SIGN MANUFACTURE FOR APPROVAL.
- LED DISPLAYS ARE TO BE WATCHFIRE XVS19MM DISPLAYS OR APPROVED EQUAL.
- BUILT-IN LED SOFTWARE FOR LED MESSAGING SHALL BE USED.
- IT IS RECOMMENDED THAT THE SIGN MANUFACTURER REVIEW ALL DIMENSIONS AND SPECIFICATIONS AND PROVIDE INPUT TO HR GREEN TO ENSURE AN EFFICIENT USE OF MATERIAL WHILE MAINTAINING THE DESIGN INTENT OF THE SIGN. ANY CHANGES TO THE DESIGN, DIMENSIONS, OR SPECIFICATIONS MUST BE APPROVED BY HR GREEN.
- *BID ALTERNATIVE** - LED LIGHTS USED TO HIGHLIGHT THE EDGE OF THE SIGN IN AREAS INDICATED WITH A RED DASHED LINE ON THE SIGN ELEVATIONS. THESE LIGHTS SHALL PRODUCE A HALO EFFECT AROUND THE EDGE OF THE SIGN AND THE LIGHT SOURCE SHOULD NOT BE VISIBLE.

INSTALLATION SPECIFICATIONS

- ALL FASTENERS SHALL BE STAINLESS STEEL.
- BASE OF SIGN SHALL SIT ON FINISHED GRADE WITH APPROPRIATE WEEP HOLES, GRADE SLOPE, AND WATER PROOFING MATERIAL IMPLEMENTED TO ENSURE MINIMUM RISK OF RUST OR OTHER WATER DAMAGE.
- EXISTING ELECTRIC LINES TO BE UTILIZED FOR ALL LED FIXTURES AND BOTH LED DISPLAYS. NEW ELECTRICAL LINES INSTALLED BELOW GRADE FROM THE SHAH CENTER BUILDING TO THE PROPOSED MONUMENT SIGN SHALL BE ***BID AS AN ALTERNATIVE**.
- WIRELESS BROADBAND DATA CONNECTION IS TO BE USED FOR BOTH LED DISPLAYS. CONTRACTOR IS TO CONTACT MCC IT DEPARTMENT TO VERIFY WIRELESS BROADBAND CONNECTION SPECIFICATIONS.
- STRUCTURAL SIGN FOUNDATION/FOOTINGS TO BE DESIGNED BY HR GREEN AFTER FINAL SIGN DESIGN ALONG WITH WEIGHT OF SIGN HAVE BEEN SUBMITTED BY SIGN MANUFACTURER.
- FINAL GRADE AT THE SIGN BASE SHALL BE 832.61 AND THE EXISTING GRADE CUT TO MEET THIS ELEVATION SHALL BE EVENLY SPREAD AROUND THE SIGN. ALL DISTURBED AREAS AROUND SIGN SHALL MAINTAIN 6" TOPSOIL. ALL DISTURBED AREAS SHALL BE SEEDED WITH SALT TOLERANT SEED MIX (SEE SPECS), INCLUDING BUT NOT LIMITED TO: TRENCHES DUG FOR UTILITY INSTALLATION, GRADING OUTSIDE OF THE LANDSCAPE AREA, DISTURBED AREAS DUE TO CONSTRUCTION VEHICLES, ETC.
- CONTRACTOR SHALL LOCATE ALL UTILITIES PRIOR TO CONSTRUCTION.
- CONTRACTOR IS TO OBTAIN ALL CITY PERMITS NECESSARY PRIOR TO CONSTRUCTION. PERMITS SHALL BE SUBMITTED TO HR GREEN FOR RECORD.
- *BID ALTERNATIVE** - PROPOSED SHRUBS, PERENNIALS, AND MULCH SHALL BE INSTALLED AS PER THE LANDSCAPE PLAN AND SPECS.

INSTITUTIONAL COLORS

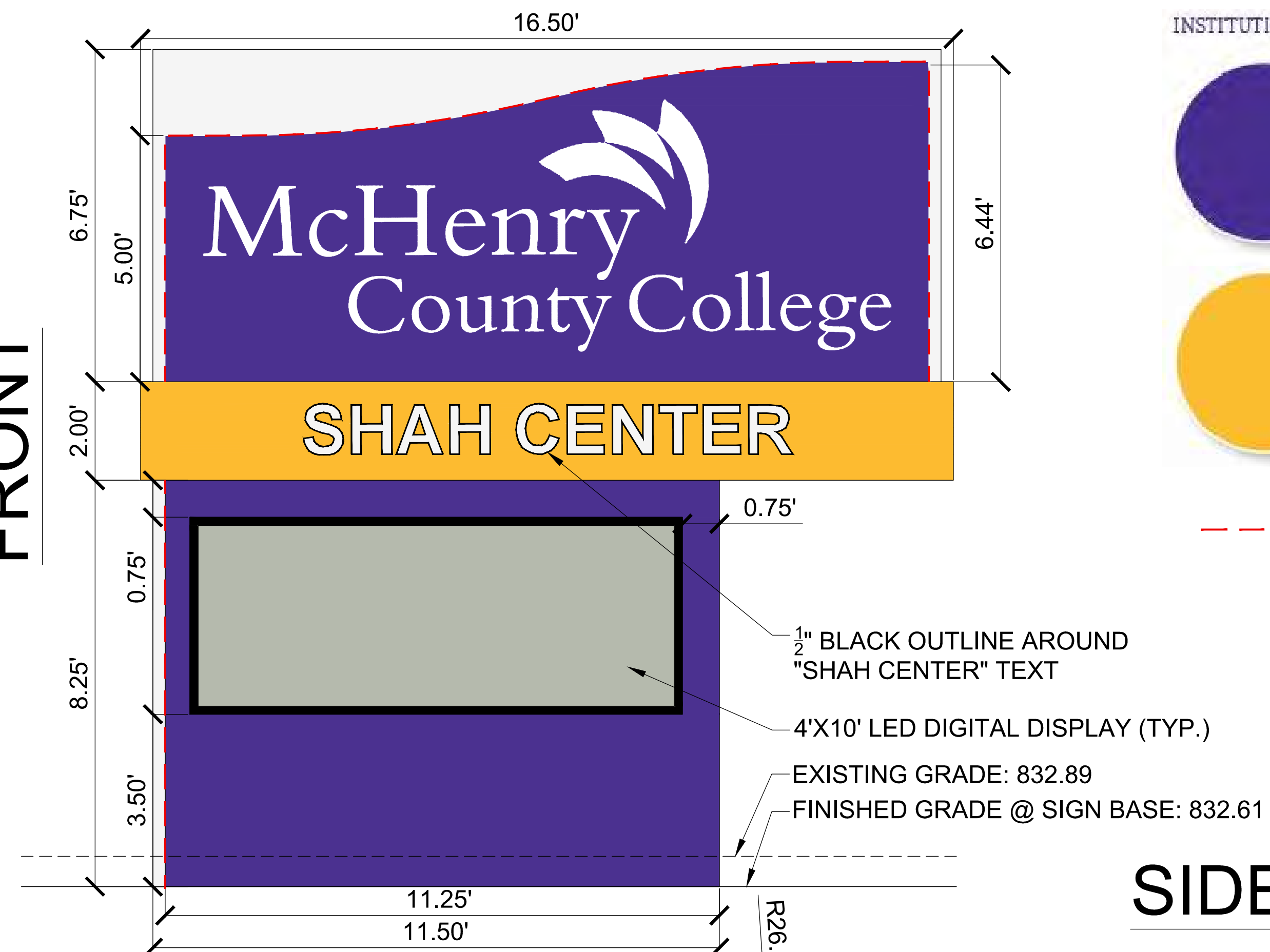


PANTONE 267 CVC
PANTONE 268 CVU
CMYK: 88, 99, 1, 0
RGB: 75, 49, 144
WEB: 4b3190

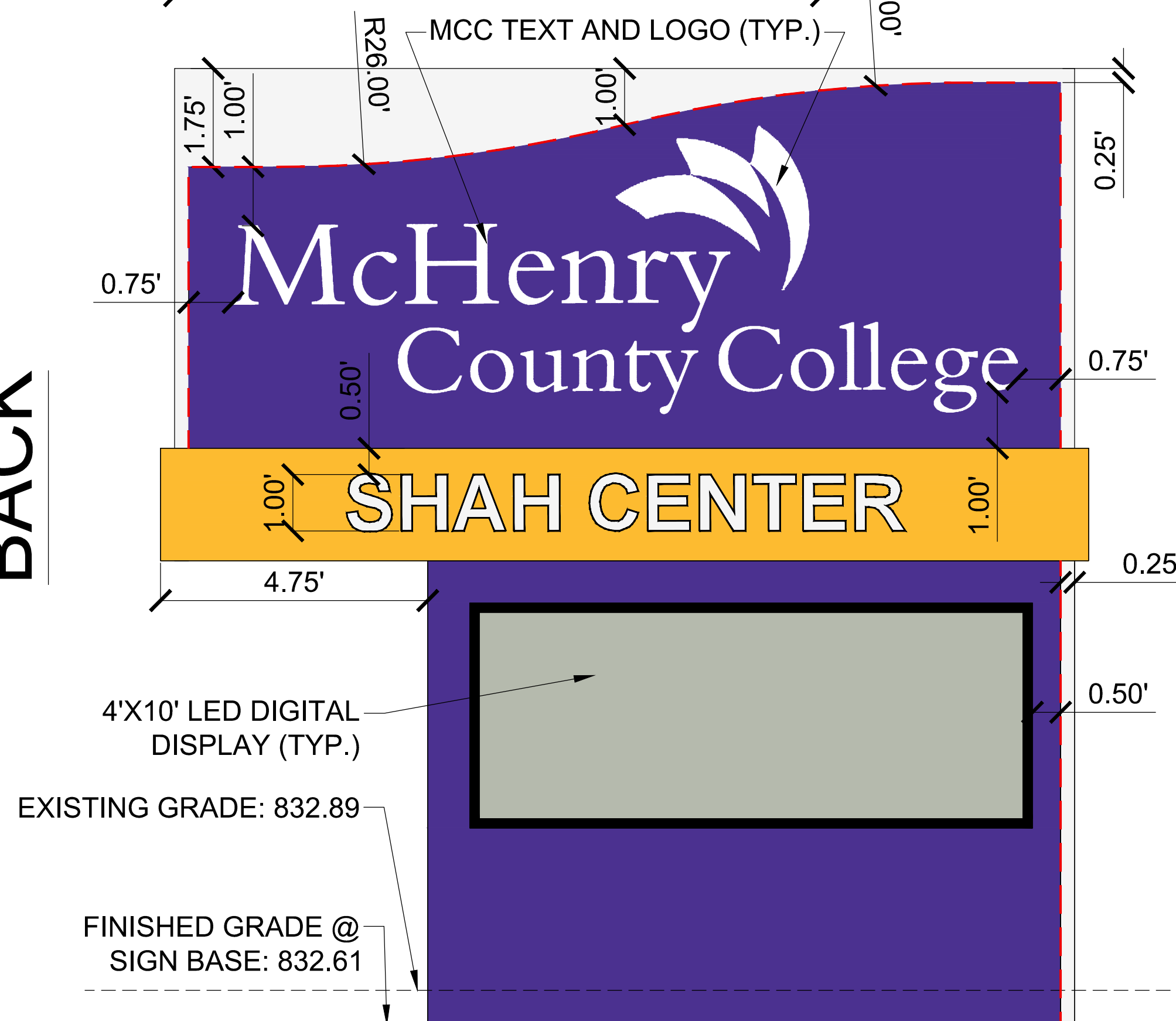
PANTONE 1235 CVC
PANTONE 115 CVU
CMYK: 0, 29, 91, 0
RGB: 253, 187, 48
WEB: fdbb30

INDICATES EDGES TO BE HIGHLIGHTED WITH LED LIGHTING. (BID ALTERNATIVE)

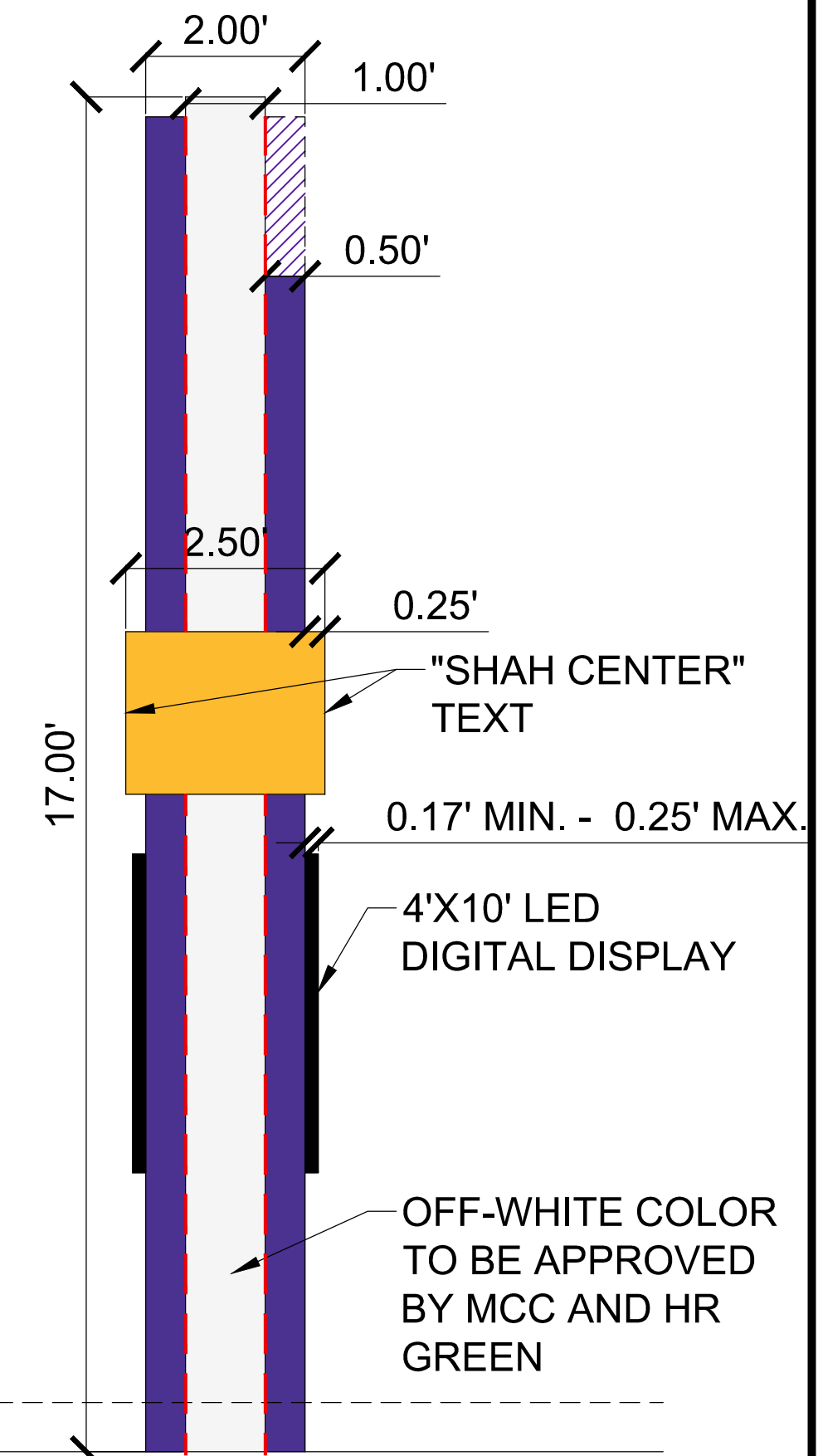
FRONT



BACK



SIDE



SCALE: 1" = 2'

DRAWN BY: SKD	JOB DATE: 08/15/2015	BAR IS ONE INCH ON OFFICIAL DRAWINGS.
APPROVED: PLS	JOB NUMBER: 86130030	0" = 1"
CAD DATE:		IF NOT ONE INCH, ADJUST SCALE ACCORDINGLY.
CAD FILE: \\HRGMHNAS\DATA\86130030\CAD\TEMPORARY SIGN\MCC SHAH TEMP SIGN EXHIBIT FINAL 05-14-15.DWG		

NO.	DATE	BY	REVISION DESCRIPTION

HRGreen
ILLINOIS DESIGN FIRM # 184.001.322
420 N. FRONT STREET, SUITE 100
MCHENRY, ILLINOIS 60050
PHONE: 815.385.1778 | TOLL FREE: 800.728.7805
FAX: 815.385.1781 | HRGreen.com

McHenry County College

MCHENRY COUNTY COLLEGE
SHAH CENTER MONUMENT SIGN
MCHENRY, ILLINOIS

--

SHEET NO. 1
